

Symptomatology Model: Variable means, standard deviations, and correlation matrix

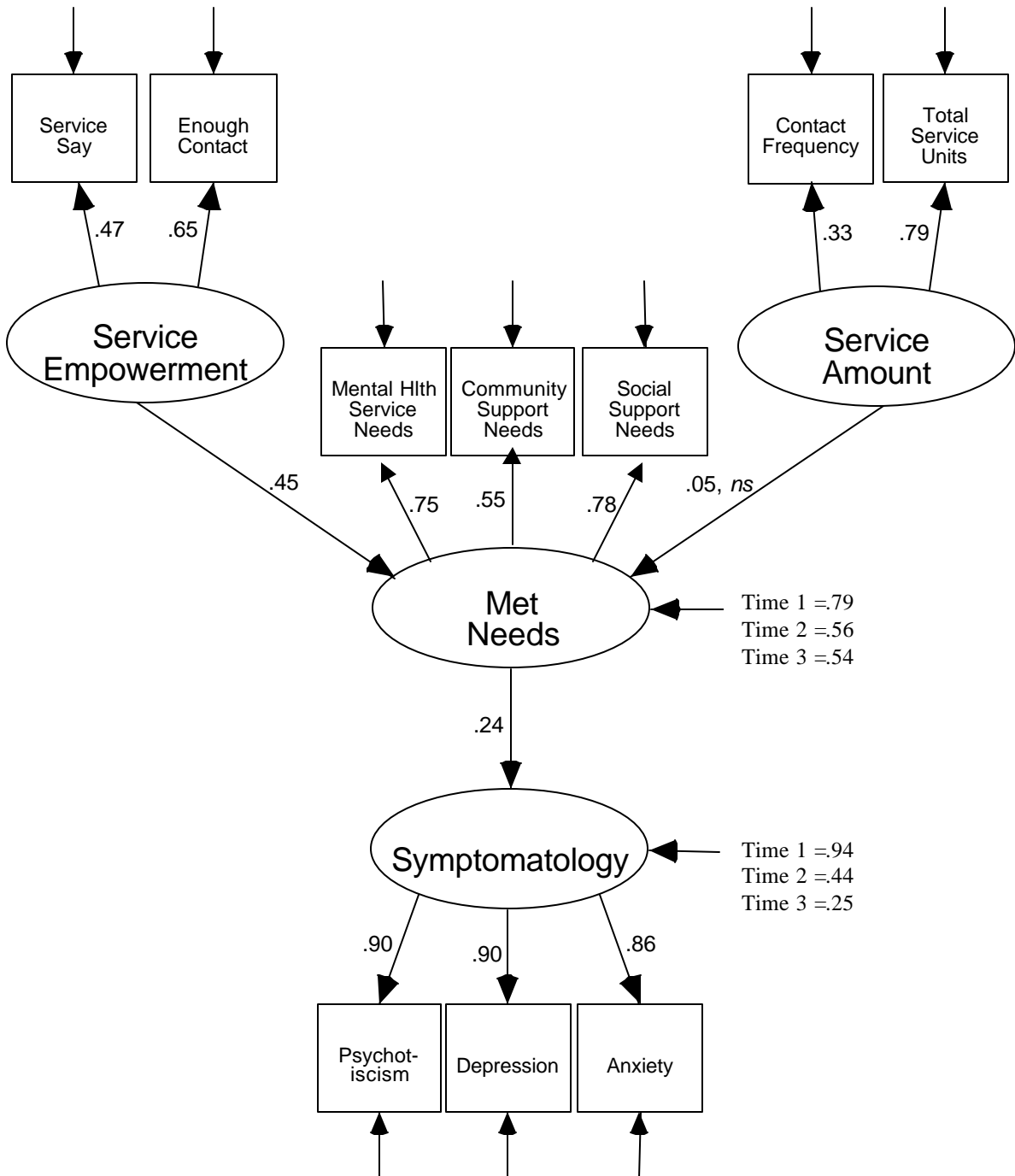


Figure 2. Final structural equation model for symptomatology outcomes.

Variable Means and SDs

VARIABLES	MEANS	SDs
CONTACT1	2.6098	.7243
CONTACT2	2.7195	.6504
CONTACT3	2.7033	.6431
SVCSAY1	2.2033	.6816
SVCSAY2	2.2439	.7153
SVCSAY3	2.2317	.7108
MNCSP1	-.1840	.8034
MNCSP2	-.1616	.7136
MNCSP3	-.1042	.6712
MNMH1	-7.012E-02	.8299
MNMH2	-4.892E-02	.8923
MNMH3	-1.789E-02	.8228
MNSS1	-.2195	1.1206
MNSS2	-.2764	1.0106
MNSS3	-.2866	.9919
CASEMG1	3.2439	.7542
CASEMG2	3.1667	.7671
CASEMG3	3.0894	.7720
SVCUNIT1	91.9508	193.1267
SVCUNIT2	180.5101	245.0902
SVCUNIT3	186.3186	253.1188
DEPRESS1	1.4171	.9201
DEPRESS2	1.3812	.9955
DEPRESS3	1.3216	.9292
ANXIETY1	1.4870	1.0310
ANXIETY2	1.4612	1.0728
ANXIETY3	1.3882	1.0028
PSYCHOT1	1.2401	.9220
PSYCHOT2	1.2304	.9813
PSYCHOT3	1.1046	.8807

Note. N=246

Sample Correlation Matrix

	CONTACT1	CONTACT2	CONTACT3	SVCSAY1	SVCSAY2
CONTACT1	1.000				
CONTACT2	0.382	1.000			
CONTACT3	0.285	0.366	1.000		
SVCSAY1	0.335	0.221	0.101	1.000	
SVCSAY2	0.184	0.323	0.176	0.241	1.000
SVCSAY3	0.049	0.185	0.240	0.214	0.346
MNCSP1	0.321	0.215	0.141	0.197	0.109
MNCSP2	0.286	0.293	0.179	0.117	0.230
MNCSP3	0.170	0.203	0.243	0.072	0.196
MNMH1	0.359	0.202	0.179	0.178	0.154
MNMH2	0.227	0.348	0.136	0.084	0.157
MNMH3	0.185	0.165	0.194	0.198	0.155
MNSS1	0.198	0.218	0.068	0.131	0.141
MNSS2	0.209	0.096	0.121	0.206	0.102
MNSS3	0.182	0.134	0.093	0.201	0.131
CASEMG1	0.123	0.098	0.040	0.086	0.124
CASEMG2	0.081	0.184	0.026	-0.003	0.179
CASEMG3	0.019	0.091	0.103	0.074	0.012
SVCUNIT1	0.037	0.050	0.042	0.047	0.001
SVCUNIT2	0.064	-0.001	0.044	0.009	-0.047
SVCUNIT3	0.013	-0.031	0.026	-0.027	-0.058
DEPRESS1	-0.296	-0.168	-0.248	-0.075	-0.042
DEPRESS2	-0.268	-0.146	-0.187	-0.067	-0.071
DEPRESS3	-0.212	-0.119	-0.245	-0.069	-0.047
ANXIETY1	-0.228	-0.108	-0.177	-0.060	-0.014
ANXIETY2	-0.238	-0.166	-0.270	-0.072	-0.085
ANXIETY3	-0.227	-0.137	-0.262	-0.113	0.000
PSYCHOT1	-0.246	-0.131	-0.182	-0.083	-0.086
PSYCHOT2	-0.200	-0.137	-0.202	-0.027	-0.057
PSYCHOT3	-0.148	-0.077	-0.128	-0.039	0.006

	SVCSAY3	MNCSP1	MNCSP2	MNCSP3	MNMH1
SVCSAY3	1.000				
MNCSP1	0.111	1.000			
MNCSP2	0.137	0.378	1.000		
MNCSP3	0.193	0.210	0.390	1.000	
MNMH1	0.109	0.651	0.388	0.225	1.000
MNMH2	0.171	0.270	0.575	0.270	0.293
MNMH3	0.286	0.159	0.337	0.527	0.179
MNSS1	-0.023	0.391	0.303	0.154	0.374
MNSS2	0.115	0.241	0.481	0.253	0.263
MNSS3	0.184	0.223	0.345	0.450	0.284
CASEMG1	0.069	0.094	0.020	0.109	0.096
CASEMG2	0.064	0.025	0.152	0.054	0.048
CASEMG3	0.118	0.077	0.075	0.090	0.138
SVCUNIT1	-0.066	-0.014	-0.051	0.035	-0.044
SVCUNIT2	0.010	0.085	0.002	0.053	0.098
SVCUNIT3	-0.002	0.074	-0.078	0.057	0.088
DEPRESS1	-0.038	-0.313	-0.226	-0.144	-0.305
DEPRESS2	-0.029	-0.246	-0.284	-0.113	-0.246
DEPRESS3	-0.074	-0.246	-0.185	-0.210	-0.262
ANXIETY1	0.031	-0.207	-0.117	-0.100	-0.224
ANXIETY2	-0.010	-0.240	-0.239	-0.088	-0.223
ANXIETY3	-0.016	-0.157	-0.129	-0.174	-0.172
PSYCHOT1	-0.003	-0.320	-0.169	-0.089	-0.349
PSYCHOT2	0.038	-0.245	-0.215	-0.105	-0.223
PSYCHOT3	-0.027	-0.195	-0.146	-0.189	-0.188

	MNMH2	MNMH3	MNSS1	MNSS2	MNSS3
MNMH2	1.000				
MNMH3	0.303	1.000			
MNSS1	0.245	0.151	1.000		
MNSS2	0.391	0.242	0.337	1.000	
MNSS3	0.269	0.468	0.254	0.379	1.000
CASEMG1	0.079	0.075	0.001	-0.018	0.110
CASEMG2	0.140	0.061	0.007	0.002	-0.052
CASEMG3	0.118	0.127	0.013	-0.013	0.039
SVCUNIT1	-0.017	0.030	0.003	-0.027	-0.066
SVCUNIT2	0.093	0.189	0.024	-0.022	0.015
SVCUNIT3	0.061	0.119	0.072	-0.048	-0.010
DEPRESS1	-0.264	-0.175	-0.223	-0.196	-0.186
DEPRESS2	-0.332	-0.208	-0.163	-0.297	-0.267
DEPRESS3	-0.197	-0.259	-0.128	-0.253	-0.243
ANXIETY1	-0.210	-0.196	-0.143	-0.178	-0.138
ANXIETY2	-0.349	-0.199	-0.132	-0.254	-0.189
ANXIETY3	-0.173	-0.241	-0.076	-0.213	-0.207
PSYCHOT1	-0.228	-0.170	-0.234	-0.123	-0.144
PSYCHOT2	-0.302	-0.160	-0.132	-0.228	-0.188
PSYCHOT3	-0.174	-0.224	-0.090	-0.211	-0.205

	CASEMG1	CASEMG2	CASEMG3	SVCUNIT1	SVCUNIT2
CASEMG1	1.000				
CASEMG2	0.444	1.000			
CASEMG3	0.243	0.395	1.000		
SVCUNIT1	0.141	0.251	0.150	1.000	
SVCUNIT2	0.140	0.294	0.303	0.470	1.000
SVCUNIT3	0.148	0.243	0.344	0.475	0.821
DEPRESS1	0.021	0.038	0.043	0.013	-0.112
DEPRESS2	-0.068	0.014	0.064	0.002	-0.059
DEPRESS3	0.024	0.074	0.056	-0.053	-0.107
ANXIETY1	-0.001	0.021	0.050	-0.010	-0.145
ANXIETY2	-0.040	-0.065	0.064	-0.033	-0.130
ANXIETY3	0.032	0.001	0.064	-0.103	-0.186
PSYCHOT1	0.023	0.010	0.069	-0.017	-0.109
PSYCHOT2	-0.020	-0.015	0.056	-0.023	-0.071
PSYCHOT3	0.103	0.047	0.064	-0.042	-0.108

	SVCUNIT3	DEPRESS1	DEPRESS2	DEPRESS3	ANXIETY1
SVCUNIT3	1.000				
DEPRESS1	-0.082	1.000			
DEPRESS2	-0.053	0.662	1.000		
DEPRESS3	-0.083	0.563	0.584	1.000	
ANXIETY1	-0.140	0.778	0.594	0.501	1.000
ANXIETY2	-0.126	0.644	0.788	0.560	0.697
ANXIETY3	-0.163	0.493	0.561	0.771	0.611
PSYCHOT1	-0.089	0.830	0.661	0.513	0.791
PSYCHOT2	-0.085	0.623	0.841	0.553	0.618
PSYCHOT3	-0.077	0.486	0.553	0.791	0.551

	ANXIETY2	ANXIETY3	PSYCHOT1	PSYCHOT2	PSYCHOT3
ANXIETY2	1.000				
ANXIETY3	0.665	1.000			
PSYCHOT1	0.667	0.534	1.000		
PSYCHOT2	0.800	0.583	0.724	1.000	
PSYCHOT3	0.578	0.757	0.567	0.641	1.000

Number of cases = 246.