

Who received Ohio publicly-funded Mental Health Services in Appalachian areas during FY 2007?

Bulletin 3: June, 2008

In FY 2007, 53,707 people who resided in Ohio's Appalachian areas received publicly-funded mental health (MH) services from the Ohio Department of Mental Health Services, the local MH board, and Ohio's behavioral health hospitals. The purpose of this analysis is to provide information about the consumers' basic demographic characteristics, changes in Medicaid eligibility patterns, and Consumer Outcomes results.

MH Consumers Residing in Appalachian Areas

The Ohio Department of Development, using U.S. Census data and the Appalachian federal designations, created a geographical classification for Ohio's 88 counties to help analysts compare population shifts across county types. Since local MH board areas can include multiple counties, the scheme has been adapted so that all counties within the board area carry the same classification. The board categories are Appalachian, Rural, Metropolitan, Suburban, and Mixed. A mixed board area includes two county types, such as a rural and suburban. Board areas comprised of Appalachian and rural counties are classified as Appalachian. The Appalachian group is as follows: Adams-Lawrence-Scioto, Athens-Hocking-Vinton, Belmont-Harrison-Monroe, Brown, Clermont, Columbiana, Fayette-Ross-Pickaway-Pike-Highland, Gallia-Jackson-Meigs, Jefferson, Muskingum-Coshocton-Guernsey-Morgan-Noble-Perry, Tuscarawas-Carroll, Wayne-Homes, and Washington.

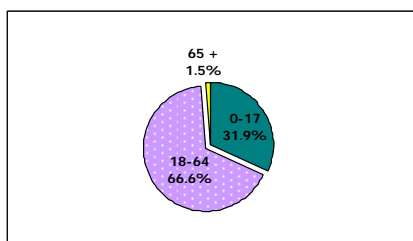
Board Geographical Classification	FY 2007 Board Count	% of Statewide Count	% Change From FY 2002
Appalachian	53,707	17.0%	17.1%
Statewide Count	315,283		22.5%

According to Table 1, 17.0% of all consumers receiving publicly-funded MH services lived in an Appalachian board area. Between FY 2002 and FY 2007, Appalachian consumers increased by 17.1%, compared to a 22.5% statewide increase.

Appalachian MH Consumers by Age Cohort¹

In FY 2007, 66.6% of the Appalachian consumers were between the ages of 18 and 64. (Refer to Graph 1). From FY 2002 to FY 2007, the 0-17 age cohort grew by 16.4%, compared to an 18.6% increase for the 18-65 age group. The 65+ age cohort decreased dramatically by 50.3%.

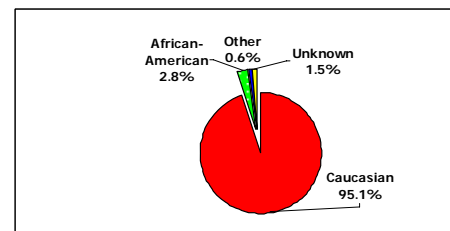
Graph 1--FY 2007 Appalachian MH Consumers by Age



Appalachian MH Consumers by Race¹

According to Graph 2, 95.1% of the Appalachian consumers in FY 2007 were Caucasian and 2.8% were African-American. From FY 2002 to FY 2007, the "Other" category, which includes Hispanics and Asian-Americans, grew by 59.7%, compared to 11.0% for African-Americans and 17.5% for Caucasians.

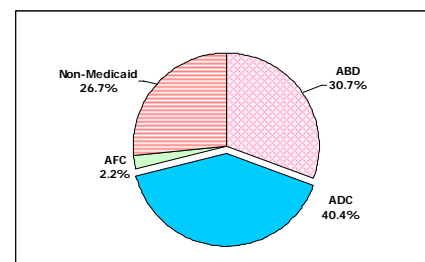
Graph 2--FY 2007 Appalachian MH Consumers by Race



Medicaid Eligibility Patterns¹

In FY 2007, 39,365 or 73.3% of the Appalachian consumers were enrolled in Medicaid. ADC-Medicaid eligible consumers, which include children enrolled in CHIPs, represented 40.4% of all consumers served compared to 30.7% who were ABD-Medicaid (Aged, Blind, Disabled) eligible. (Refer to Graph 3). Overall, Medicaid-eligible consumers increased by 23.4% from FY2002 to FY2007, while ADC-Medicaid consumers grew by 25.2%.

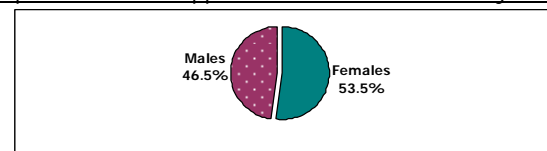
Graph 3--FY 2007 Appalachian MH Consumers by Medicaid Eligibility



Appalachian MH Consumers by Gender¹

In FY 2007, 53.5% of the MH Appalachian consumers were females, and 46.5% were males. Female consumers grew by 15.6% between FY 2002 and FY 2007, and male consumers by 18.6%.

Graph 4--FY 2007 Appalachian MH Consumers by Gender



How do People in Appalachia Look on Outcomes?

For Youth:

Analysis of FY 2007 Outcomes administrations completed at intake show no significant differences in severity from previous years. In the 90 days before admission, 8.5% were arrested, 11.5% were suspended from school, 10.9% spent time in juvenile detention, and 5.6% made a self-harm attempt.

Youth entering treatment in FY 2007 spent 9.3% of the days in the 90 days preceding treatment in an out-of-home placement. The estimated cost was \$5.3 million, with the cost of residential placement at \$3 million, and foster care at \$1.5 million. In other words, in SFY 2007, each person residing in an Appalachian board area paid \$4.11 for the 90 days preceding treatment in an out-of-home placement.

The vast majority of time was spent in-home, with 53.9% of the in-home time spent with the biological mother, 19.8% with both biological parents, 13.0% with a relative, 10.9% with the biological father, and 2.7% with adoptive parents.³

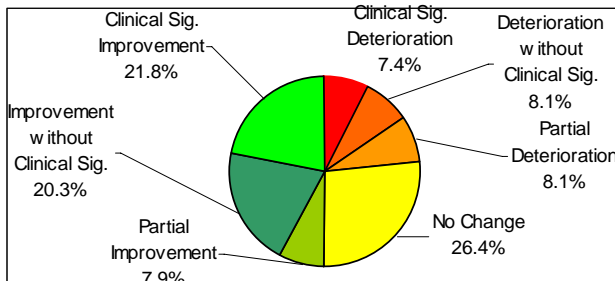
For Adults:

Analysis of FY 2007 Outcomes administrations completed at intake show no significant differences in severity from previous years. At admission, 23.6% of all adults reported employment (full or part-time or sheltered). 1.2% reported being homeless, 0.3% reported living in a correctional facility, and 0.7% reported living in a mental health treatment facility. 64.9% reported physical health interference in day-to-day functioning sometimes or more often. Another 14.7% of adults reported at intake that the agency treated them with dignity and respect only sometimes or less often.³

How Are People Doing in Appalachian Board Areas?

Treatment works for youth. (Refer to Graph 5). In an analysis of initial to six-month Parent Outcomes administrations, 50.0% of youth experienced various levels of improvement on the Problem Severity scale. Another 26.4% experienced no reliable change, and 23.6% had some amount of deterioration.³

Graph 5--FY 2007 Youth Treatment Outcomes



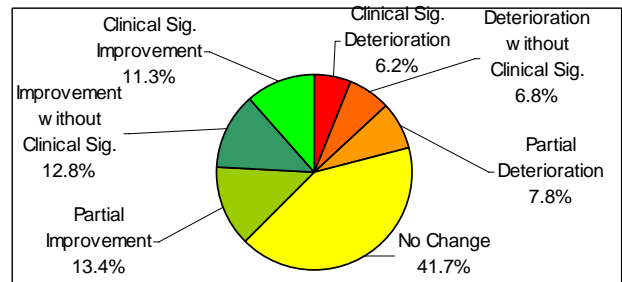
Societal services delivered to children are expensive, and may use available resources for funding mental health services. An

assessment of 993 youth entering services in SFY 2007 showed that in the 90 days prior to service entry, \$1.38 million was spent on out-of-home placements of various types. In the 90 days following entry into the system, \$1.76 million was spent on out-of-home placements. The majority of increased spending was seen in residential treatment, drug rehabilitation, and therapeutic foster care, while use of jail, juvenile detention and inpatient hospitalization decreased.

Table 2--FY 2007 Youth Out-of-Home Placement Costs		
Placement Type	Initial Cost	90 Day Cost
Jail	13,048	6,160
Juvenile Detention	185,020	119,240
Inpatient	214,000	59,000
Drug Rehabilitation	3,900	11,700
Medical Hospital	2,750	750
Residential Treatment	483,016	1,037,577
Group Emergency Shelter	3,480	0
Vocational Training	0	7,200
Group Home	66,144	97,152
Therapeutic Foster Care	118,420	126,604
Specialized Foster Care	11,330	440
Foster Care	273,350	294,366
Supervised Ind. Living	1,800	1,800
Total	1,376,258	1,761,989

Treatment works for adults. (Refer to Graph 6). In an analysis of initial to six-month Adult Outcomes administrations, 37.5% of adults experienced various levels of improvement on the Symptom Distress scale. Another 41.7% experienced no reliable change, and 20.8% had some amount of deterioration.³

Graph 6--FY 2007 Adult Treatment Outcomes



Sources of Information:

- ¹ MACSIS Data Mart, data pulled as of May 28, 2008.
- ² Ohio Department of Development, Office of Strategic Resources, Metropolitan and Micropolitan Statistical Areas
- ³ Ohio Consumer Outcomes System Production Database

For more information:

For more information about this Bulletin, please contact Dee Roth, OPER Office Chief. Contributors: Jim Healy and Helen Anne Sweeney

Version 1.0, June 11, 2008